

KETIL INGEBRIGTSEN

**HEAD OF DEPARTMENT OF BUSINESS
REGISTERS**

C CONTENT OF THE PRESENTATION

- The central coordinating register (CCR)
- The register of the reporting obligation of enterprises (OR)
- Metadata/datadefinition

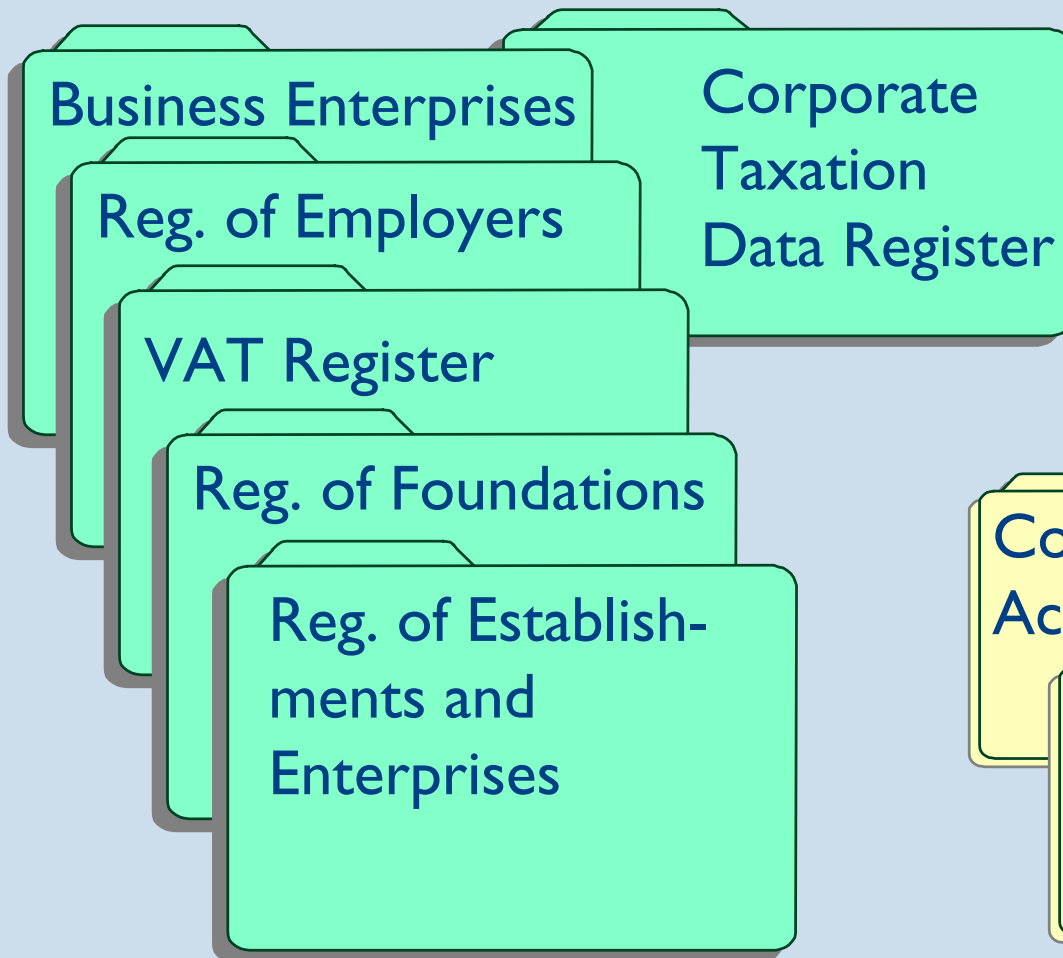
The Central Coordinating Register for Legal Entities

Legal objectives:

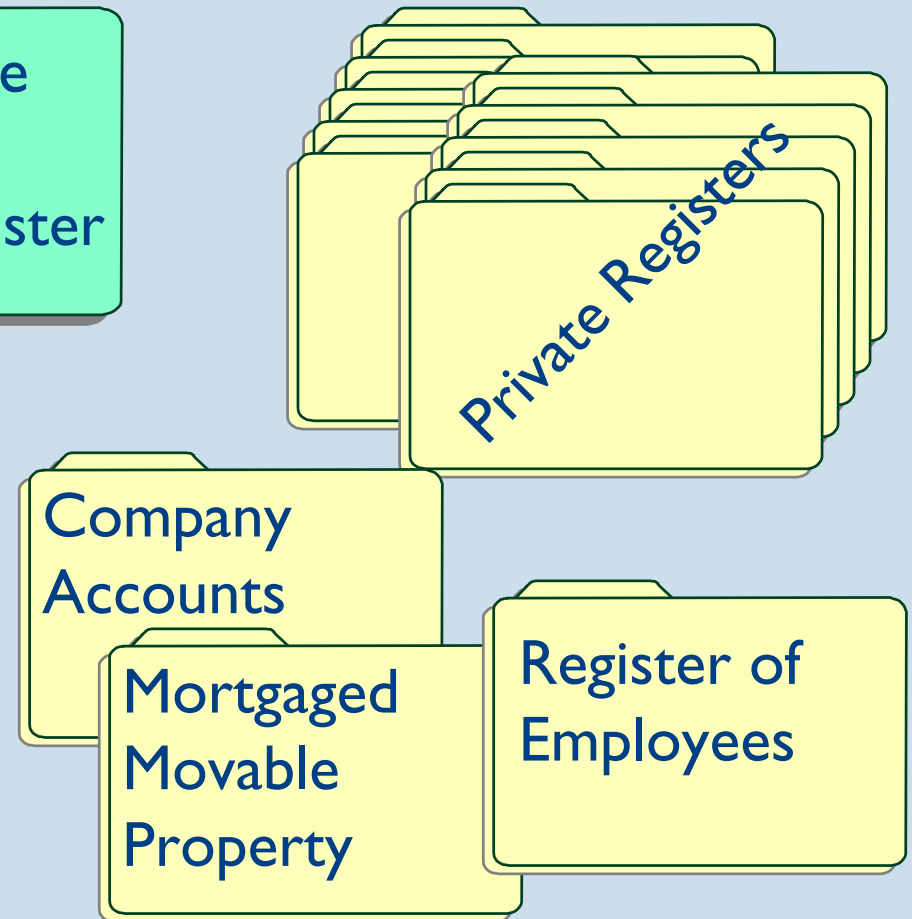
- **Identification** of all legal entities registered in the largest public registers
- Increased **efficiency** in the public and private sector
- **Reduce multiple collection** of the same information
- Reduce economic crime

Required and voluntary cooperation

Associated registers:



Voluntary cooperation



Organization number

- All entities identified by organization number
- An entity cannot be registered in an associated register before
 - organization number is provided
 - registered in Central Coordinating Register

Obligation and right to register

- Obligated to register
 - Government bodies, counties and municipalities
 - Companies, associations and other legal persons
 - Sole proprietor businesses
 - People registered in associated registers
- Entitled to register
 - Other associations, organizations, single person businesses etc.

Data registered for all entities

- Identification data
 - Date of foundation, name and address
 - Type of entity
 - Purpose (type of activity)
 - Contact person/manager
- Codes to be registered
 - Status (running, bankrupt, etc.)
 - NACE-code
- Information that can be registered
 - Phone number and electronic addresses
 - Administrative information

Data registered, if present

- Representatives
 - Participants (not shareholders)
 - Members of the board
 - Auditor, Accountant
 - Who has the right to sign
 - Capital
 - Number of employees

Associated registers:

- The Register of Employers
- The Register of Business Enterprises
- The Register of Foundations
- The VAT Register
- Statistics Norway's Central Register of Establishments and Enterprises
- Corporate Taxation Data Register

Obligated data interchange

Associated register should...

- Provide CCR with information when received and controlled
- Use organisation number and information registered in CCR

The CCR should...

- Immediately submit information to associated register

Type of entities in the CCR:

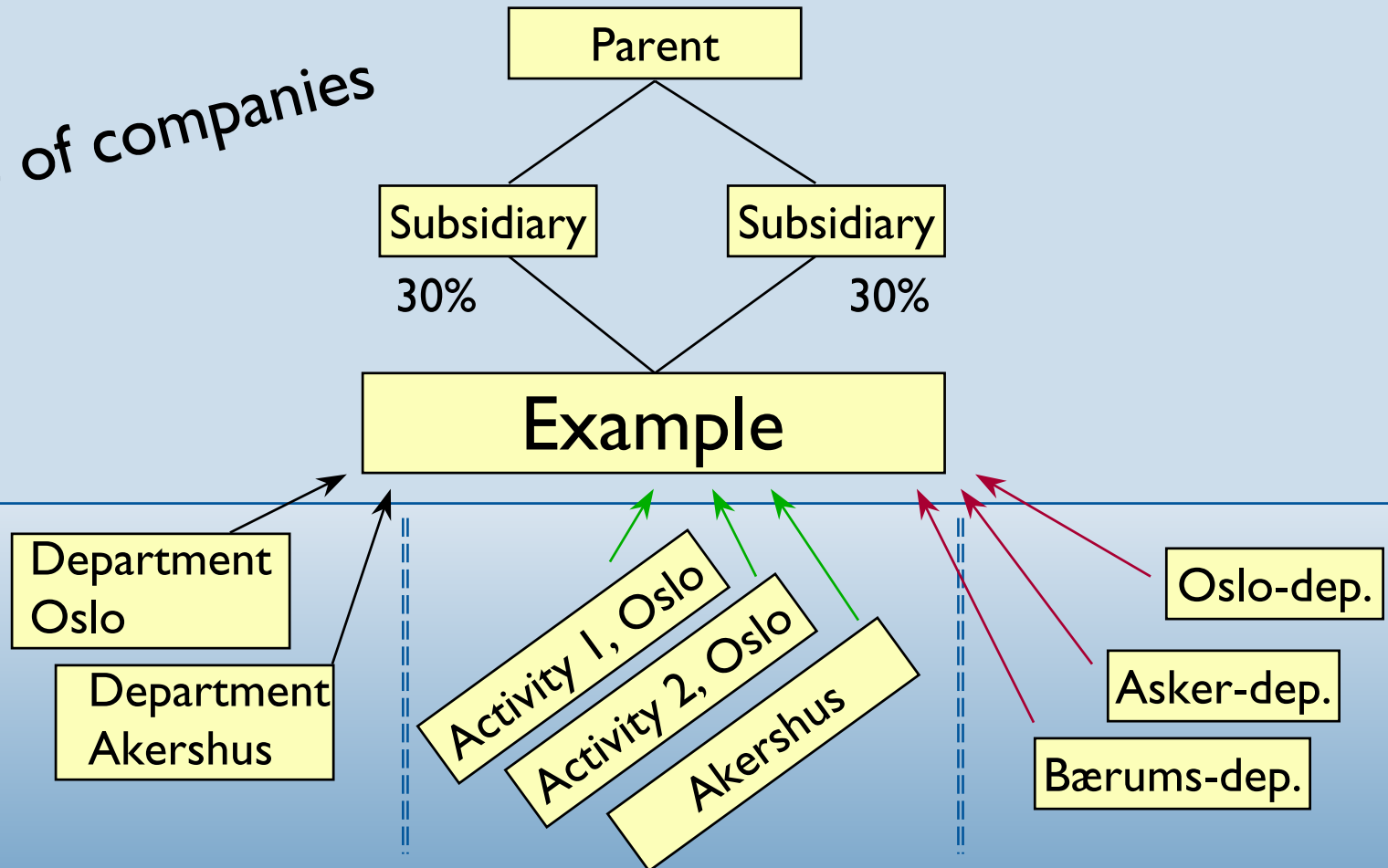
- Government bodies, counties and municipalities
- Companies, associations, foundations and other legal persons
- One-man businesses

The obligation to register in CCR depends on the obligation to register in an associated register.

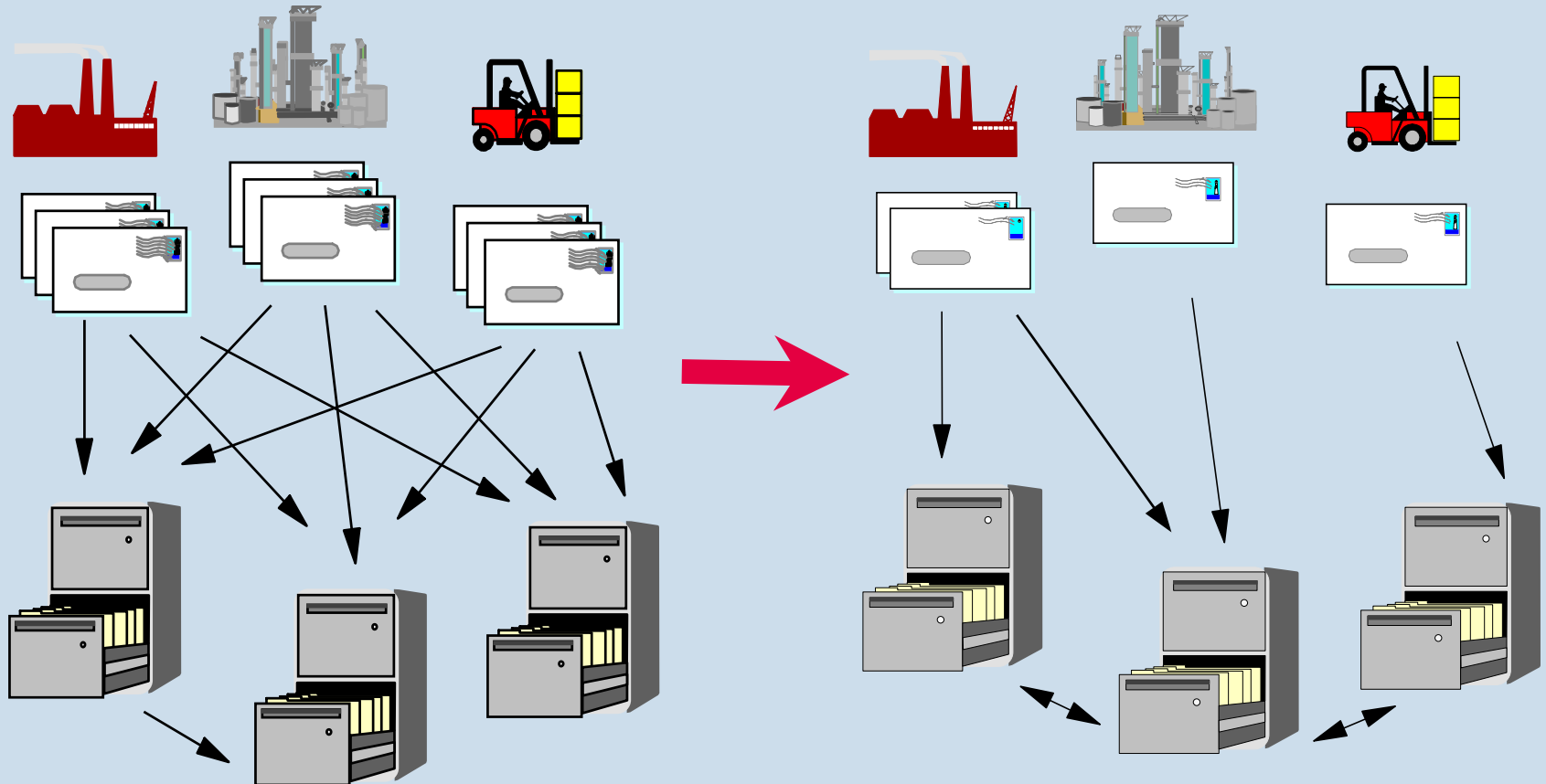
Other legal persons are entitled to register in the CCR.

The Central Coordinating Register for Legal Entities

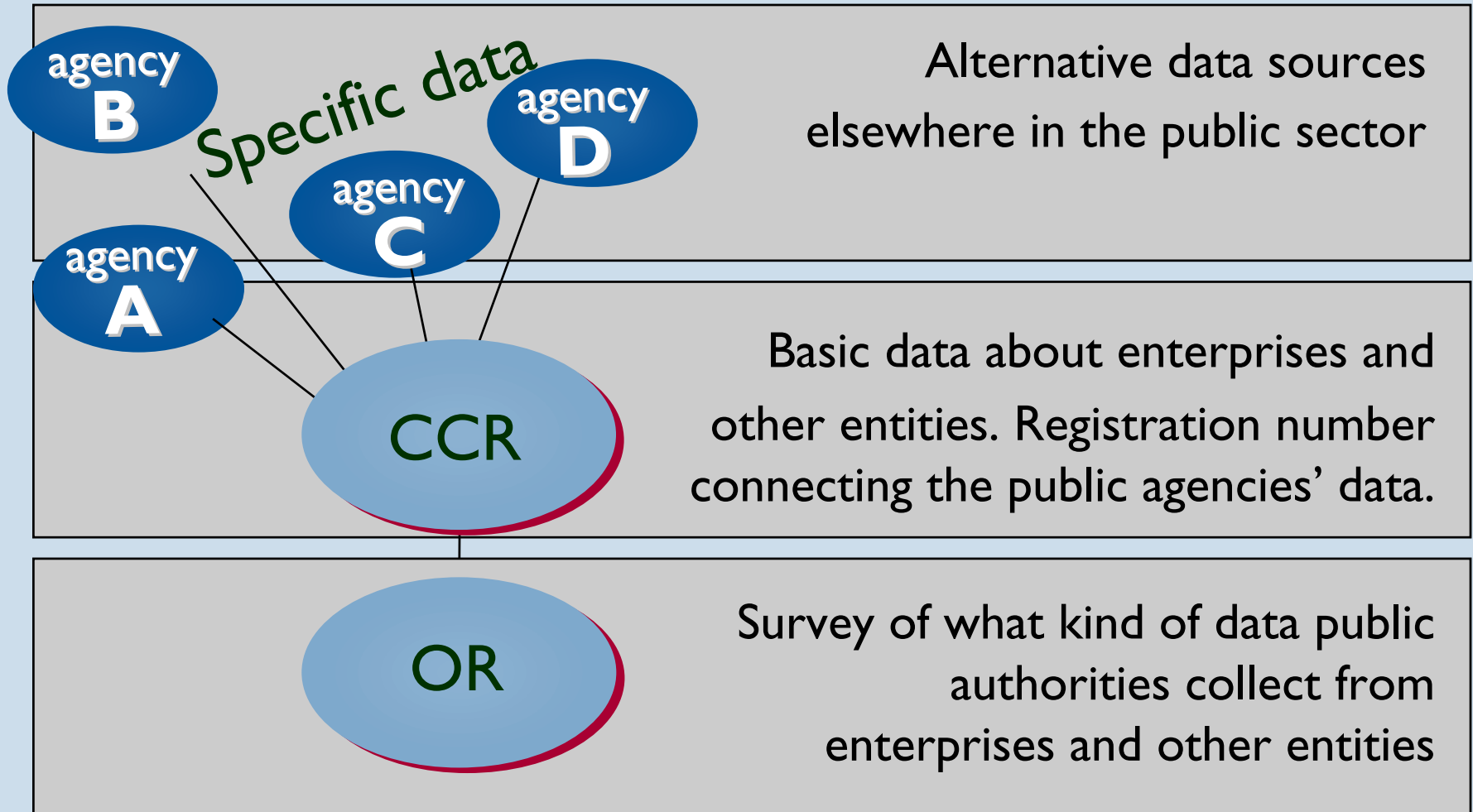
Group of companies



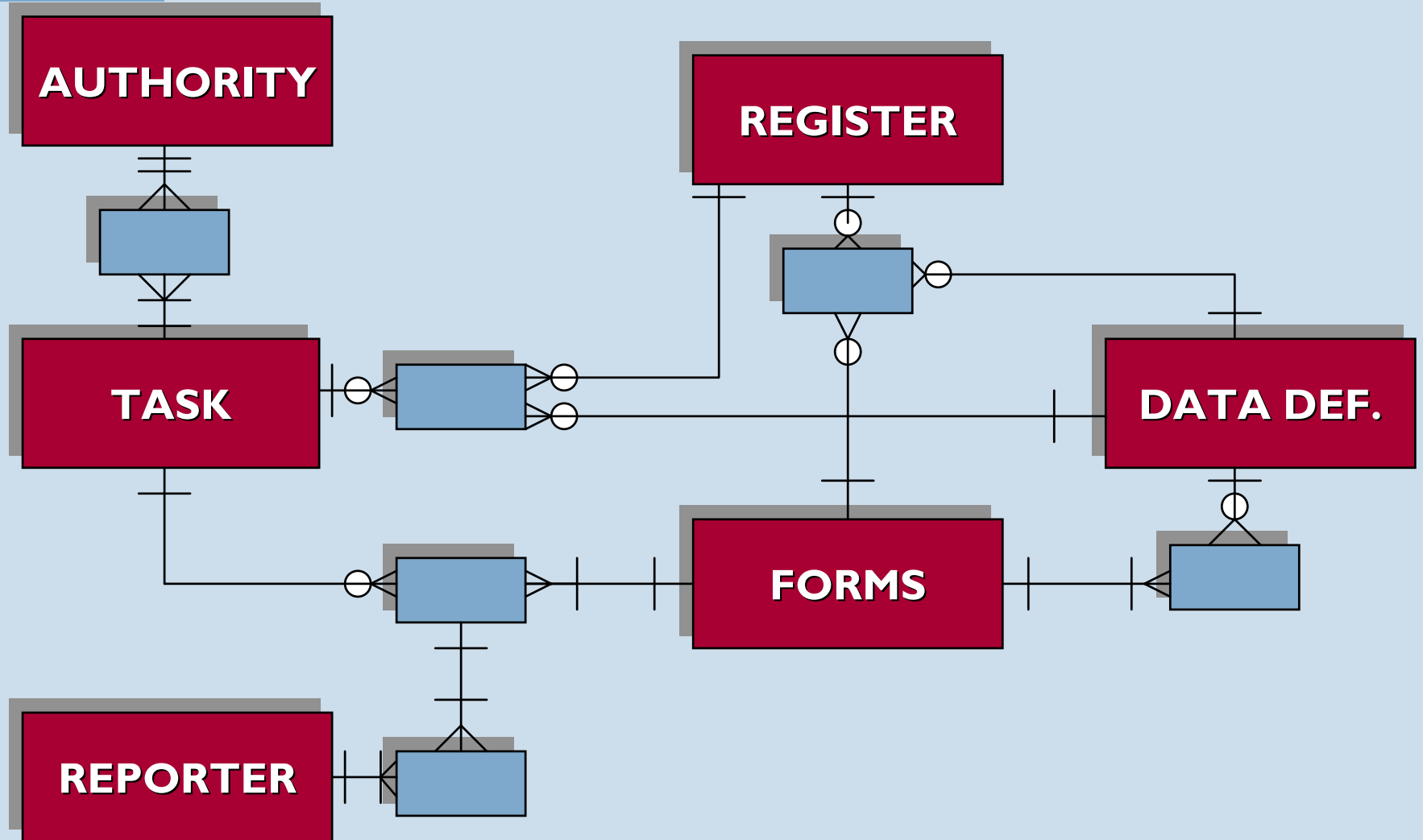
The objectives of OR (Register of the Reporting Obligations of Enterprises)



Links between registers



System model (simplified)



Agency obligations

What obligations to OR do they have?

- Advance contact when planning new reporting obligations
- Reporting obligation to OR in the event of
 - New reporting obligations
 - Changes to existing reporting obligations
- Consultation body when amending regulations
- Coordinating reporting obligations that lend themselves to coordination
 - When collecting the same information from the same enterprise
 - When agencies individually have the authority to collect information
 - Where coordination is possible in practice

OR's Contributions

What benefits may OR have for agencies?

- Overview of all state reporting obligations and existing coordination
 - Which other agencies have already collected the information we require?
 - What data do we have ourselves?
- Advice when designing forms
 - Stipulations for appropriate forms for state agencies
- Data definitions

We have the coordination tool,

.. but public administration needs corporate data!

- To gain an overview of business actors
- To inspect and regulate activities
- To distribute obligations and rights
- For statistics and social planning

Meta data

- What is meta data?
 - Data about data
- Why do we need meta data?
 - Data exchange
 - Data quality (The number of pears must not become the number of apples)
 - Coordinated reporting
- The Register of the Reporting Obligations of Enterprises is a meta database

Example of meta data



MELDING TIL NIS NOTIFICATION TO THE NIS

Norsk Internasjonalt Skipsregister / The Norwegian International Ship Register

EIERENS NAVN OG ADRESSE THE OWNERS NAME AND ADDRESS	Navn / Name	
	Adresse / Address	
	Nasjon / Nation	
	Organisasjons nr. / Org. number	
	Fødselsnr. / Date of birth + id.number	
	Tel. and Fax	

Existing meta data

- Data identifier 18
- Name Entity; business registration no.
Group Basic data
- Type Primary ID
- Category Number
- Definition Unit's registration number in the
Brønnøysund Register Centre

New meta data

Representation format

- Number: 10
- Name: Business registration no.
- Data type: Positive integer
- Min/max value: 800000000/999999999
- Min/max field length: 9/9
- Designation:
- Select type: Free text, string
- Format: xxx xxx xxx
- Control: Modulus 11
- Error message: You have entered invalid figure

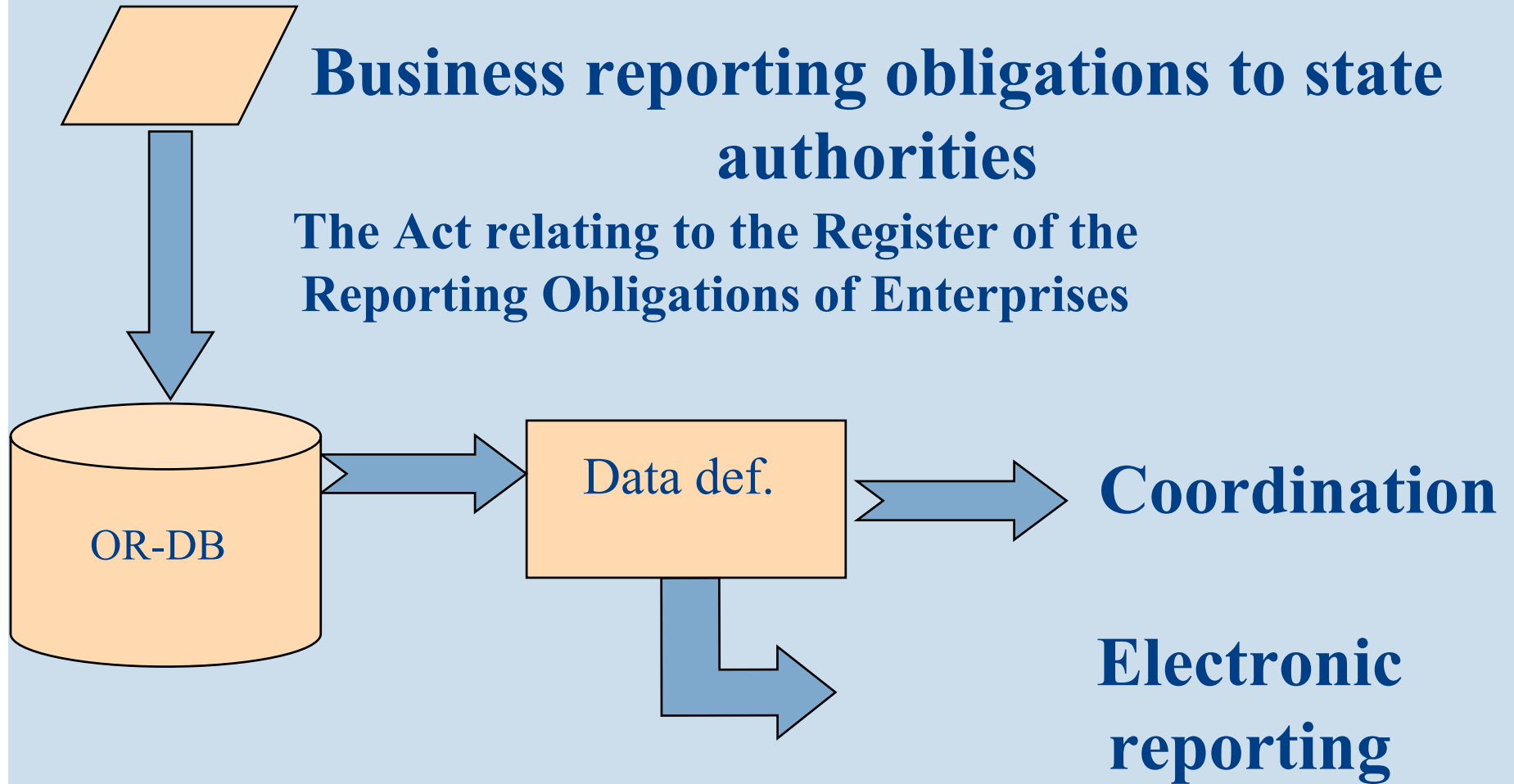
New meta data continued

- Prompt text: Enter owner's business registration number
- Help texts: Nine digits without any blanks
- Hint:
- Owner: The Brønnøysund Register Centre
- Alias:
- Relations:
- Repetition:
- Sensitivity:
- Demand type:
- Pre-fill: Pre-fillable, readable

OR

Business reporting obligations to state authorities

The Act relating to the Register of the Reporting Obligations of Enterprises



Why expand OR content?

- To offer administration and business meta data for use with electronic reporting
- To make OR an appropriate tool through electronic reporting
- To facilitate 24-hour access to administration agencies
- To establish efficient procedures for collecting and maintaining meta data

Updating OR

- Meta data linked to a data element must be reported to OR
- OR fills in
 - Group structures
 - Prompts and help texts for data definitions
 - Texts used to override texts inserted by OR
 - Value domain including code lists

Using meta data from OR

Examples of agencies using meta data from OR:

- The Tax Directorate
- Statistics Norway
- The Brønnøysund Register Centre

System developers in business/industry and public administration may download meta data free to use in electronic reporting interfaces

Effects of an expanded meta database

- Simpler to share meta data
- A register for meta data
- Specifications easily available
- Speeds the development of solutions for electronic reporting
- Enhanced meta data quality
- Strengthens the coordination function